



**ENHANCES SITUATIONAL AWARENESS
AND WEATHER AVOIDANCE CAPABILITY**

**AFIS® Graphical Weather for the
GNS-XIs Enhanced FMS**

AFIS® Graphical Weather

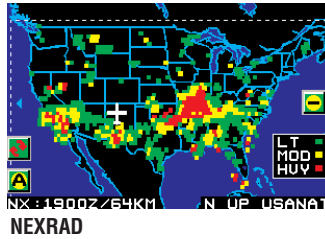
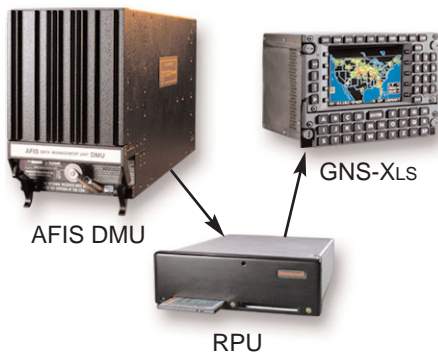
Global Data Center

Weather designed for aviation

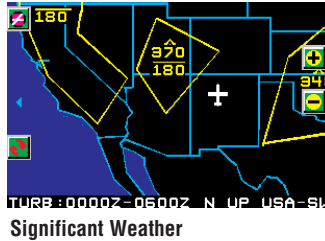
- Uplinked via VHF or SATCOM
- Does not interfere with in-flight telephone
- Service designed to keep operating costs down

Remote Processing Unit (RPU)

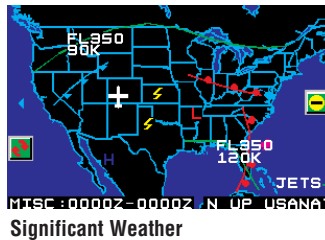
- Updateable software
- Optional memory card stores images during power interrupt
- Accommodates multiple displays
- Actual aircraft position and flight plan route overlaid on a moving map



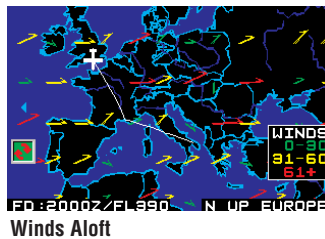
- U.S. National
- U.S. Regional - 200 NM and 100 NM
- Historical NEXRAD replay of last six images
- Convective weather one-hour forecast
- Cell Tops with movement



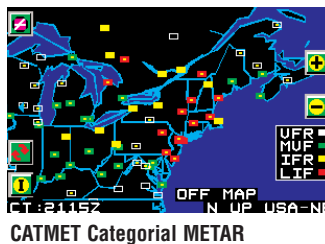
- U.S. National
- U.S. Regional - 200 NM and 100 NM
- International



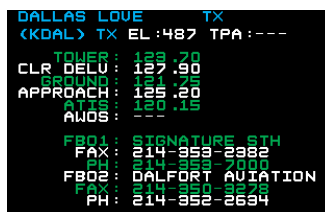
- High and low pressure areas
- Hurricane plotting
- Icing, turbulence and ceiling
- Jet stream location, altitude, and speed



- U.S. National
- U.S. Regional
- International
- Surface to approximately FL530



- U.S. National, U.S. Regional, and International
- Airports color-coded to depict VFR/IFR
- Similar to a weather depiction chart, but updated hourly
- Interactive display provides detailed subtext



Airport Facility Directory

- Airport frequencies
- Airport elevation
- FBO phone and fax numbers
- Runway orientation

Aerospace

Honeywell

15001 NE 36th Street (LN3D)

Redmond, WA 98052

Tel: 425-885-8100

Toll Free: 888-634-3330

www.honeywell.com

A60-0852-000-000
October 2005
© 2005 Honeywell International Inc.

Honeywell